

2016 BRINGING ADMINISTRATORS TOGETHER CONFERENCE

# Big Questions, Big Data, & Big Answers

April 14, 2016

**UIC** UNIVERSITY OF ILLINOIS  
AT CHICAGO

**UIC**

Lincoln Hall

707 South Morgan Street

# Workshop Presenters

- Name: Herminio Morelos  
Title: Assistant Dean for Business, Finance, & HR, Nursing  
Contact Information: hmorelos@uic.edu
- Name: Dale Rush  
Title: Associate Dean for Administrative Affairs, Pharmacy  
Contact Information: dalerush@uic.edu
- Name: Todd Van Neck  
Title: Associate Dean for Administration, Medicine  
Contact Information: tvanneck@uic.edu
- Name: Marissa King  
Title: Assistant Director, Budget & Resource Planning, Pharmacy  
Contact Information: mlking2@uic.edu
- Name: Eric McMinoway  
Title: Associate Director of Data Analytics, Nursing  
Contact Information: emcmin@uic.edu

# Workshop Presenters - continued

- Name: Brian Weaver  
Title: Assistant Director of Business and Financial Operations, Nursing  
Contact Information: [bweaver2@uic.edu](mailto:bweaver2@uic.edu)
- Name: Phoenix Wan  
Title: Director of Decision Support, Medicine  
Contact Information: [phoenix@uic.edu](mailto:phoenix@uic.edu)

# Please ...

- Turn off cell phones.
- Avoid side conversations.
- Sign the attendance roster.
- Complete the evaluation at the end of the workshop.

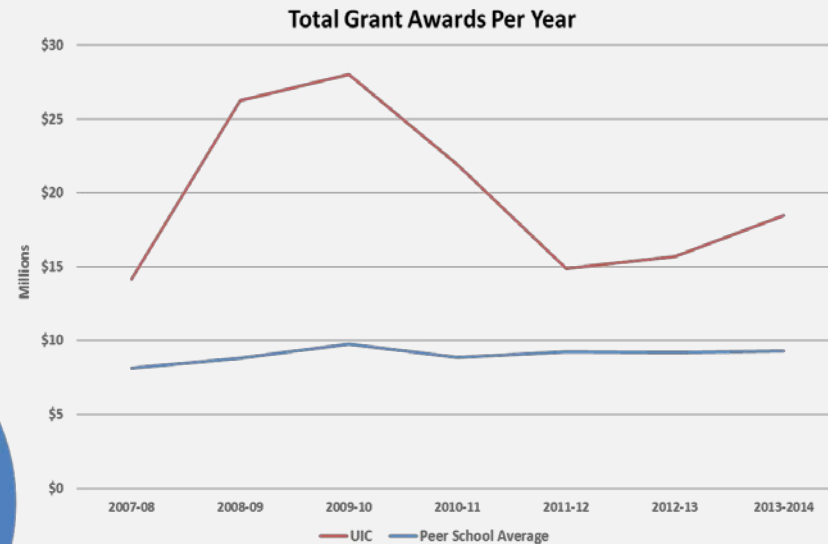
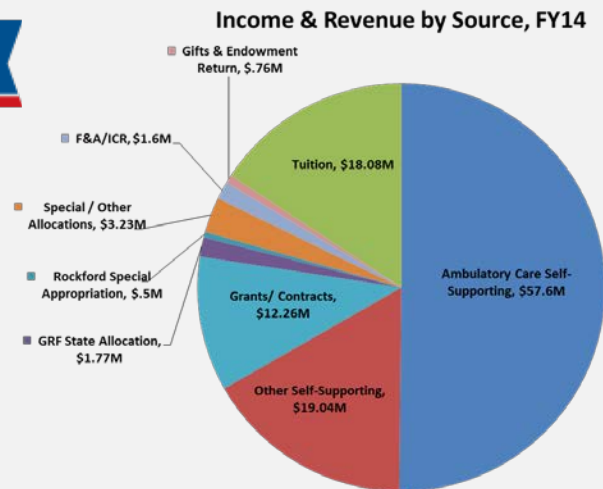
We have about 30 minutes of material to present, then will use the remaining time for questions.

# Workshop Objectives

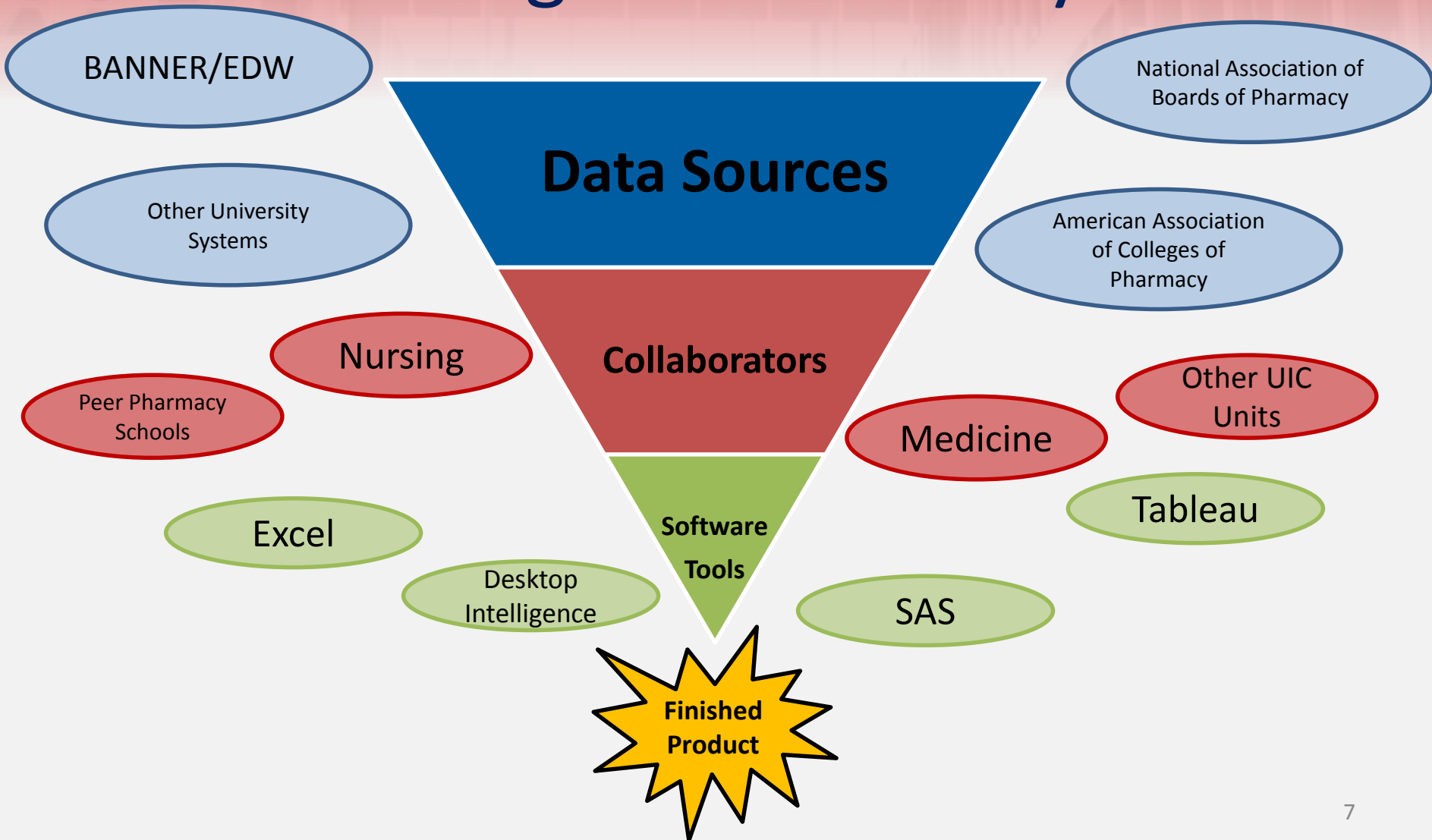
- Understanding what the big questions are – identifying desired outcomes or goals, analyzing the information, and determining whether the goals are being met
- Identifying the challenges and pitfalls in working with university and other big data
- Exposing the audience to multiple tools and approaches to analyzing big data
- Determining how to share the information – what tools to use, who the audience is/should be, what information is most relevant to them and in what format that information is most easily consumed.

# College of Pharmacy

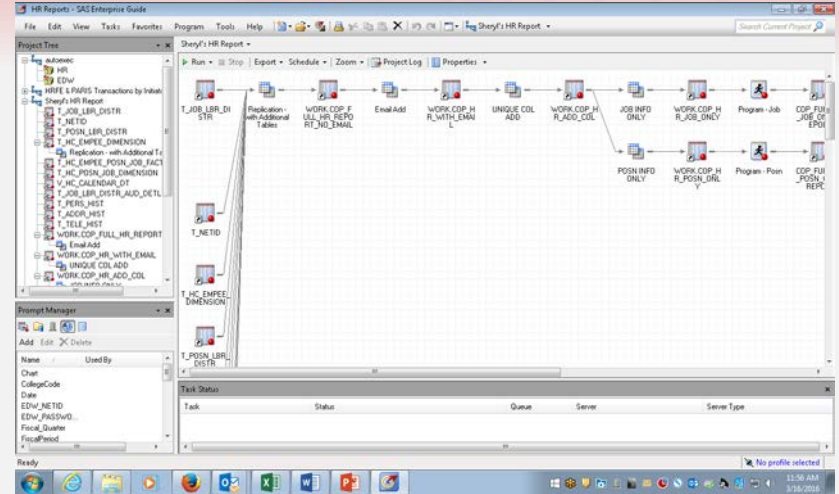
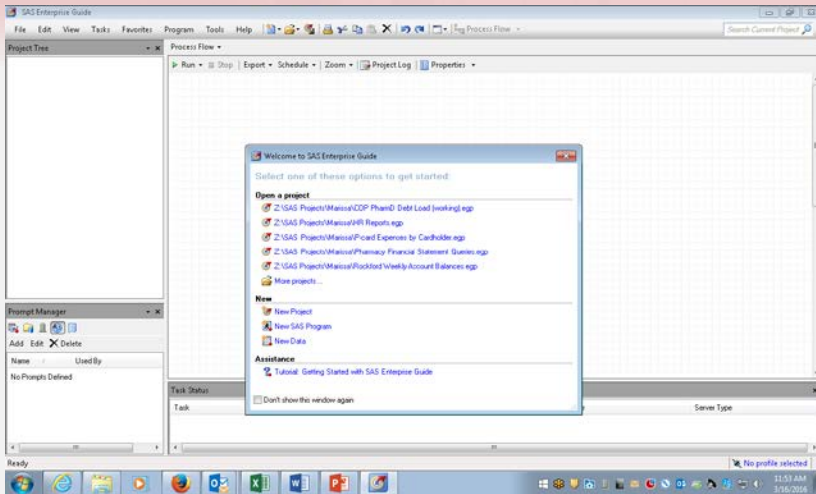
- College-wide Dashboard



# College of Pharmacy



# College of Pharmacy



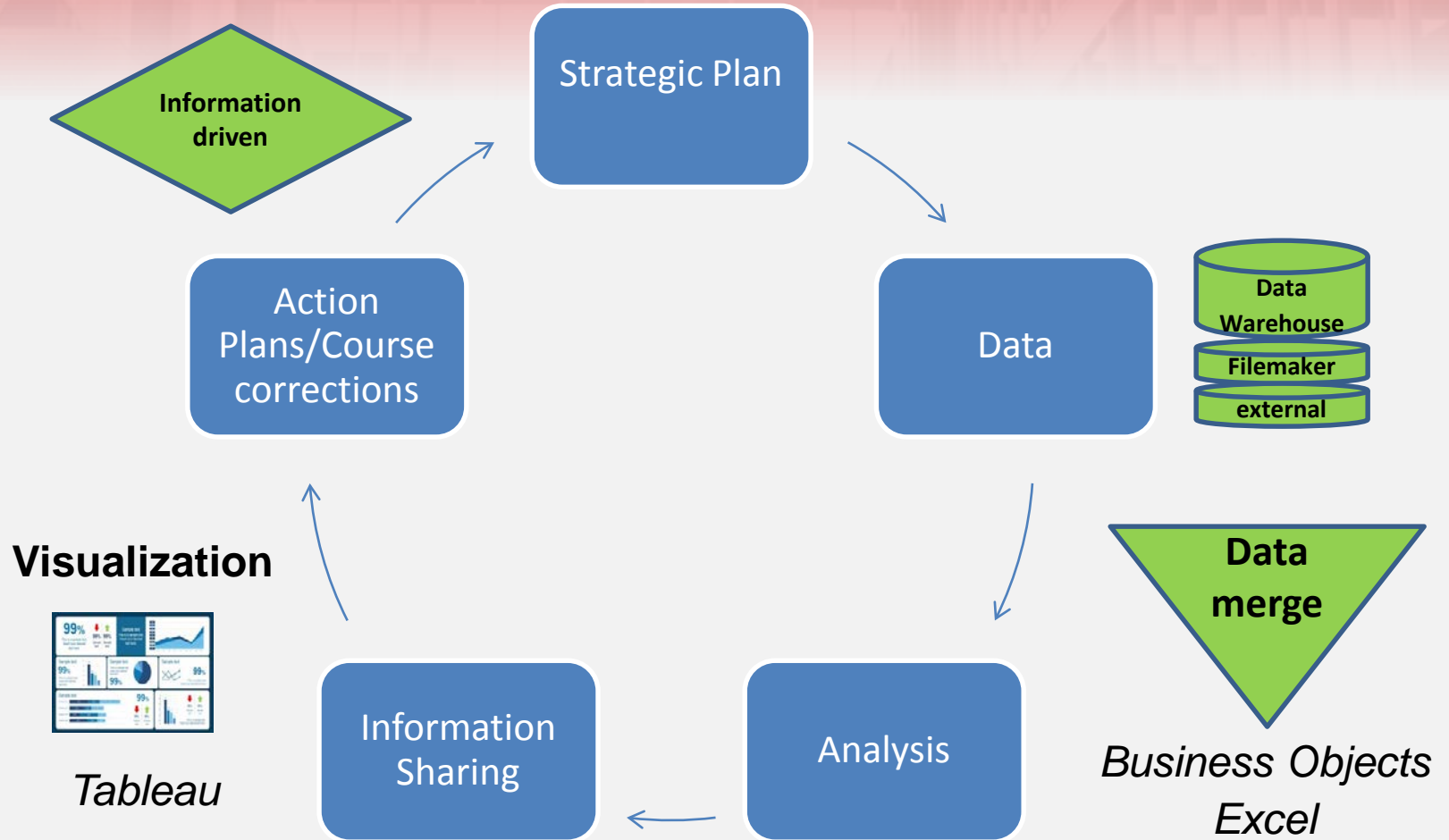
HR Reports - SAS Enterprise Guide

HRFE PARIS Transactions by Initiator

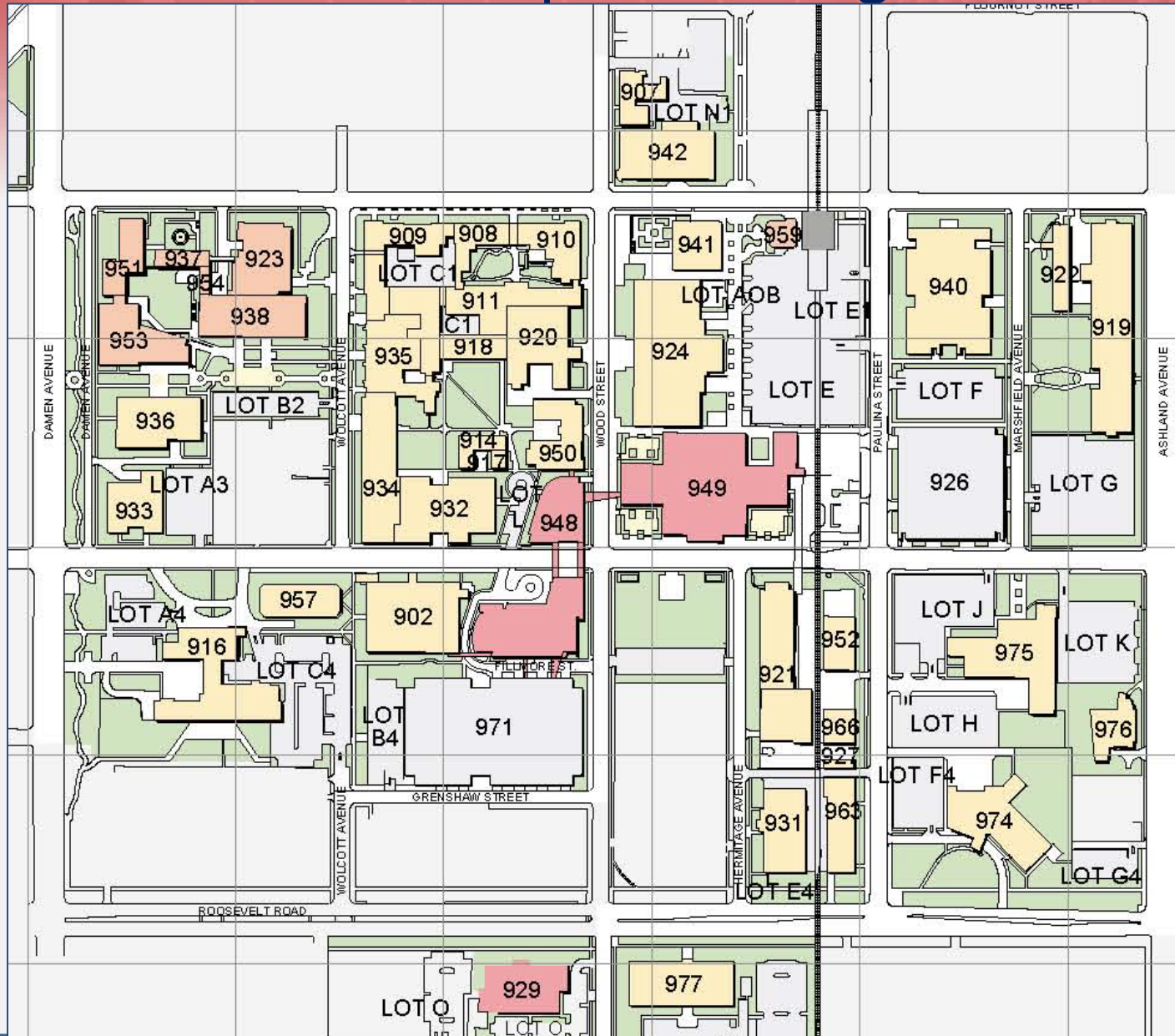
Initiator Full Name	Trans ID	Trans Type	EGC_FLAG_DESC	Trans E-actest Comp
Carnes, Monica L.	1013201	SEP	Separation	No Employee Group Change question
Conrad, Craig A.	1013214	LD	Labor Distribution Change	No Employee Group Change question
Diaz, Amanda S.	1012154	ADD	Add a Job	No Employee Group Change question
Harris, Adelta Kawana	716097	NEW	Initiate New Hire	No Employee Group Change question
Harris, Adelta Kawana	1002018	REA	Reassignment	Continue without Employee Group Change
Harris, Adelta Kawana	990548	SEP	Separation	No Employee Group Change question
Harris, Adelta Kawana	1003208	NEW	Initiate New Hire	No Employee Group Change question
Harris, Adelta Kawana	990520	NEW	Initiate New Hire	No Employee Group Change question
Harris, Adelta Kawana	1004334	NEW	Initiate New Hire	No Employee Group Change question
Harris, Adelta Kawana	1004872	SEP	Separation	No Employee Group Change question
Hausbeck, Lona Eileen	1012725	ADD	Add a Job	No Employee Group Change question
Mason, Rachel L.	1013184	ADD	Add a Job	No Employee Group Change question
Mason, Rachel L.	1013188	ADD	Add a Job	No Employee Group Change question
Ryan, Jeanne M.	1007033	NEW	Initiate New Hire	No Employee Group Change question
Ryan, Jeanne M.	1007034	NEW	Initiate New Hire	No Employee Group Change question
Ryan, Jeanne M.	1007035	NEW	Initiate New Hire	No Employee Group Change question
Ryan, Jeanne M.	1007037	NEW	Initiate New Hire	No Employee Group Change question
Wildes, Sheryl	1000076	ERIC	Employee Job Record Cha.	No Employee Group Change question
Wolfschlaeger, Sheryl	1002571	NEW	Initiate New Hire	No Employee Group Change question



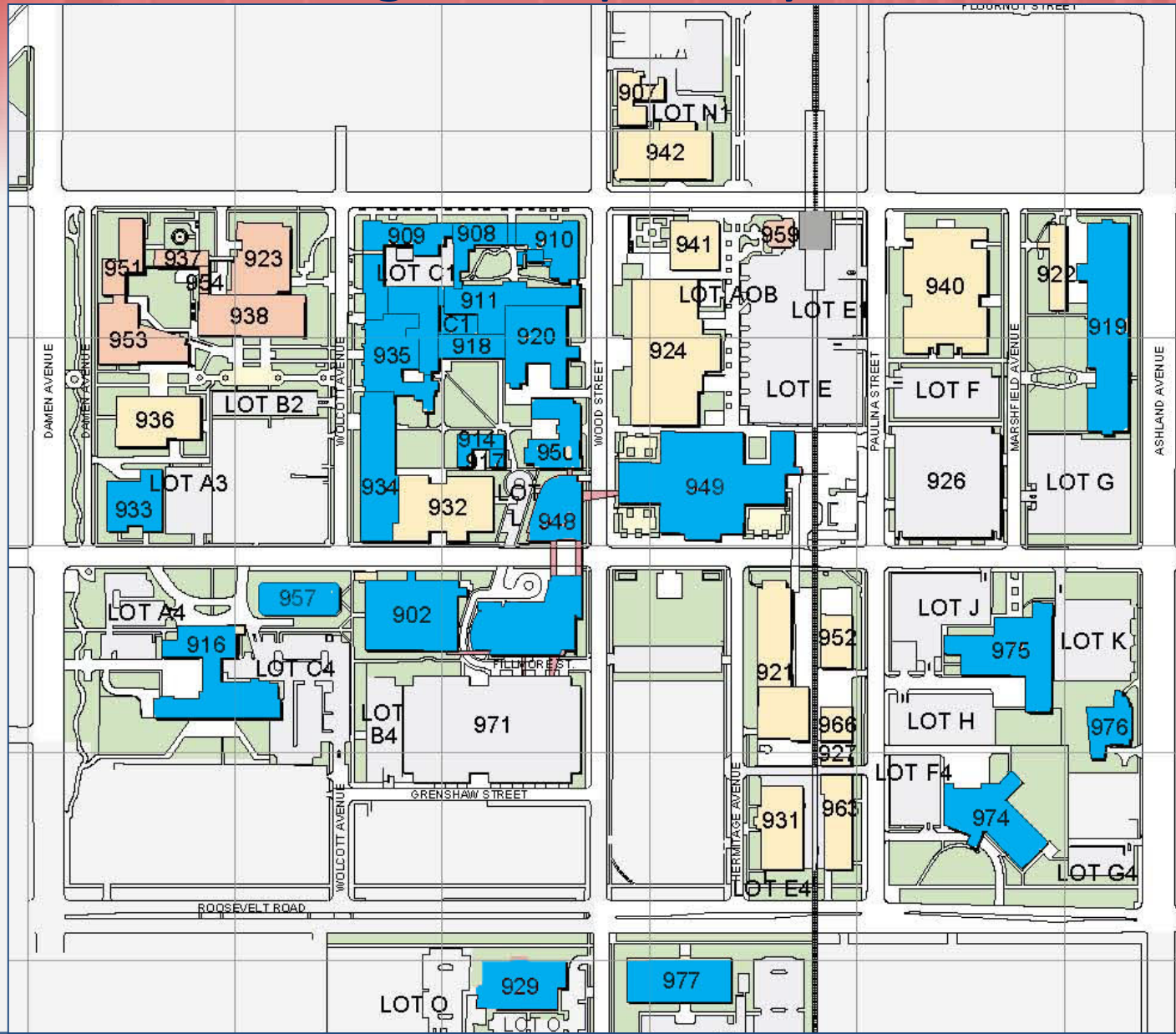
# College of Nursing



# West Campus buildings



# Buildings Occupied by COM

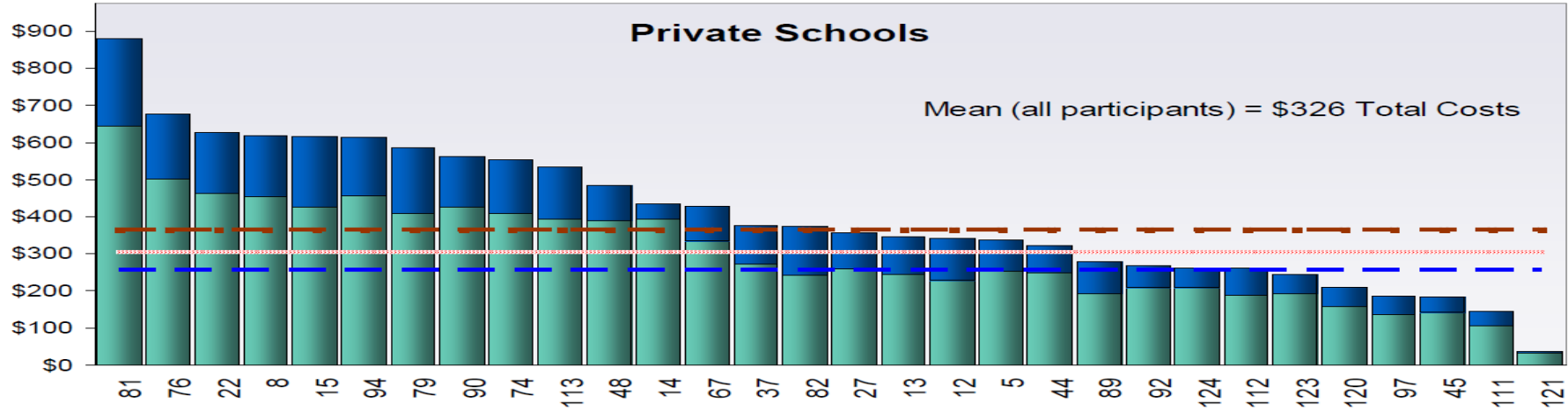
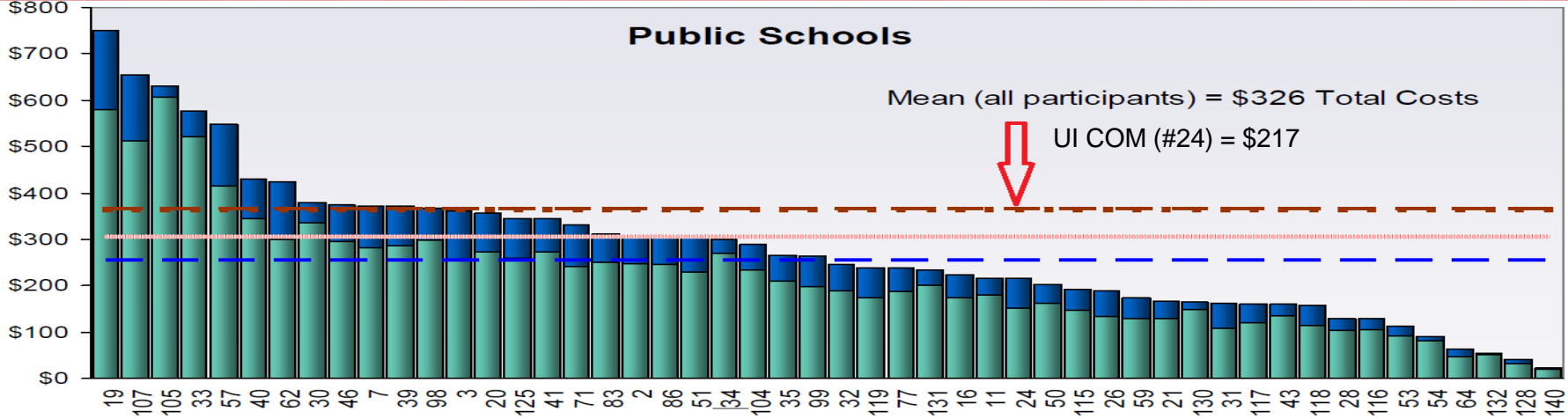


# COM Peer Data: Sponsored Programs Expenditures per Net Assignable Square Foot (NASF)

Purpose: Reflects productivity of research space

Higher Number is Favorable

Formula:  $\frac{\text{Sponsored Programs "Recorded" Expenditures}}{\text{Non-class lab NASF}}$



# COM Research Dollar Density Report


	2015						5 Year Average
	Wet_Lab NASF	Lab_Service NASF	Lab NASF Total	Direct Costs	Indirect Costs	\$ Density	
<b>College of Medicine Research Bldg</b>	<b>87,880</b>	<b>26,296</b>	<b>114,373</b>	<b>\$23,520,399</b>	<b>\$9,884,098</b>	<b>\$169</b>	<b>\$189</b>
	13,825	2,862	16,687	\$6,185,059	\$2,935,449	\$279	\$275
	3,039	1,020	4,259	\$1,042,270	\$273,185	\$245	\$308
	13,298	3,601	16,899	\$3,403,914	\$1,870,215	\$194	\$187
	13,987	4,490	18,477	\$4,202,292	\$1,669,465	\$184	\$250
	6,830	1,795	8,625	\$1,220,314	\$583,271	\$137	\$118
	13,345	4,538	17,883	\$3,475,395	\$1,174,604	\$133	\$180
	10,045	2,995	13,038	\$1,842,339	\$820,068	\$128	\$130
	6,840	3,169	10,009	\$1,692,097	\$484,788	\$126	\$143
	1,286	633	1,919	\$215,698	\$43,372	\$112	\$46
	3,638	928	4,566	\$241,021	\$29,681	\$53	\$111
	881		881				\$0
	866	265	1,131				\$68
							\$87
							\$311
<b>Medical Sciences Bldg</b>	<b>29,100</b>	<b>7,226</b>	<b>36,326</b>	<b>\$6,885,529</b>	<b>\$3,362,163</b>	<b>\$115</b>	<b>\$141</b>
	7,346	994	8,340	\$3,517,237	\$1,572,273	\$230	\$270
	1,348	128	1,476	\$234,788	\$140,496	\$159	\$114
	6,962	1,288	8,250	\$1,058,580	\$543,438	\$122	\$116
	8,060	2,508	10,568	\$1,825,625	\$1,037,200	\$71	\$110
	5,384	2,308	7,692	\$249,299	\$68,756	\$32	\$93
<b>Molecular Biology Research Bldg</b>	<b>38,371</b>	<b>11,086</b>	<b>49,457</b>	<b>\$6,651,467</b>	<b>\$3,255,815</b>	<b>\$121</b>	<b>\$128</b>
	1,391	287	1,678	\$695,152	\$345,617	\$414	\$264
	29,322	8,933	38,255	\$4,694,629	\$2,518,732	\$118	\$119
	6,267	1,600	7,867	\$1,109,755	\$332,120	\$91	\$136
	1,391	266	1,657	\$151,930	\$59,346	\$54	\$151

# COM SharePoint Site

**UIC** CoM Administrators

Document Center Reports Search Sites Akin akinjreport

- Anatomy
- Anesthesiology
- Biochemistry & Molecular Genetics
- BioEngineering
- Cancer Center
- Clinical Translational Science
- CCVR
- COM Administration
- Department of Medicine
- Dermatology
- Emergency Medicine
- Family Medicine
- Global Health Initiative
- Medical Education
- Microbiology
- MRI Research
- Neurology &
- Rehabilitative Medicine
- Neurosurgery
- Obstetrics & Gynecology
- Ophthalmology
- Orthopedics
- Otolaryngology
- Pathology
- Pediatrics
- Peoria
- Pharmacology
- Physiology
- Psychiatry
- Radiology
- Rockford
- Surgery
- Urbana
- Urology
- Akin
- akinjreport



**Welcome to the University of Illinois  
College of Medicine Administrators SharePoint Site**

SharePoint is a Microsoft collaboration environment. This system allows administrators to:

- 1.) store, edit and organize documents and reports
- 2.) create and deploy intranet websites and discussion groups

This is a powerful tool for improving communication and information flow. For example, rather than having a financial report bounce from in-box to in-box, users working on common projects may store and access necessary files, view past versions, and publish and comment on changes.

To view files specific to your department:  
 »select your department name in the left navigation bar  
 »select "Shared Documents"

**Relevant Documents**

**COM**

- AAMC
- Advancement
- Documentation and Statements

**Faculty Affairs and HR**

- Documentation

**UI Medical Center**

- Ambulatory and Hospital Reports

**Medical Service Plan**

**University of Illinois**

*World-Class Education.  
World-Class City.*

COLLEGE OF  
MEDICINE

**Quick Links**

- FTE-Base Salary Trend
- Financial
- FPSC
- Ambulatory/Hospital Reports
- MSP

**College of Medicine Resources**

- UIC Branding - Office of Marketing & Communications
- University of Illinois Medical Center Toolkit - Professional image library
- College of Medicine Compliance Overview
- COM Home

COM DASHBOARD

College of Medicine Dashboard

# Workshop Summary

- Collaboration
- Networking
- Find the tool that fits
- Value of Assessment – assessment, outcomes, plans for improvement
- Benchmarking
- Collecting data is not easy
- Similar questions – different solutions

# Questions / Concerns?